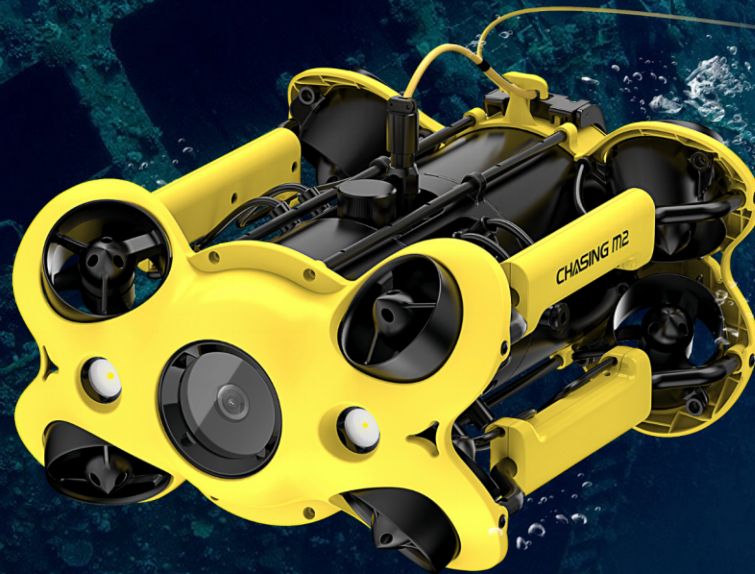


CHASING M2

Industrial-Grade Underwater ROV



www.chasing.com

CHASING M2 is a Industrial-Grade Underwater ROV designed for professional users and industrial applications. M2 has 8 Vectored Thrusters layout which allows OMNI movement in all directions. The Maximum speed is 3 Knots, depth is 100 meters (330 FT) and the maximum horizontal radius is 200 meters (660FT). Compatible with sophisticated attachments such as Robot Claw, GoPro camera, external LED lights and laser scaler etc. CHASING M2 offers a built in 4K/ 1080p and 12 megapixel EIS image stabilization camera, 4000 lumen LED lights, removable battery and removable SD memory card. The aluminum alloy compact body (weighs less than 4.5KG / 10lbs) allows single person operation and Quick-Deployment in 3 minutes. The CHASING M2 is your portable, easy use and reliable light industrial underwater ROV.



8 Vectored-Thrusters
Layout, OMNI
movement



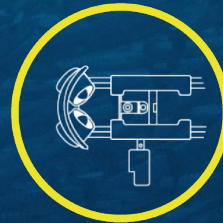
Swappable
Battery



3 Knots speed
100 meters depth rating
200 meters radius



4K+EIS Image
Stabilization ,
F1.8 Aperture



Sophisticated
Attachments



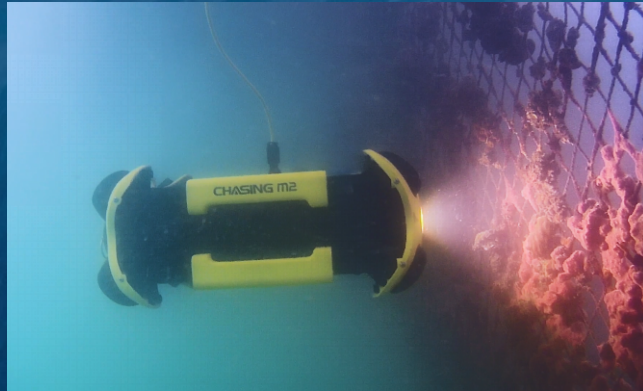
Anti-Stuck
Motor



Removable SD memory
card, download anytime
and anywhere

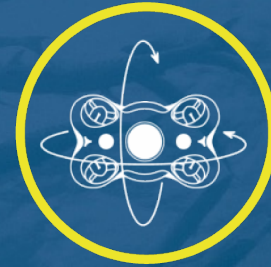
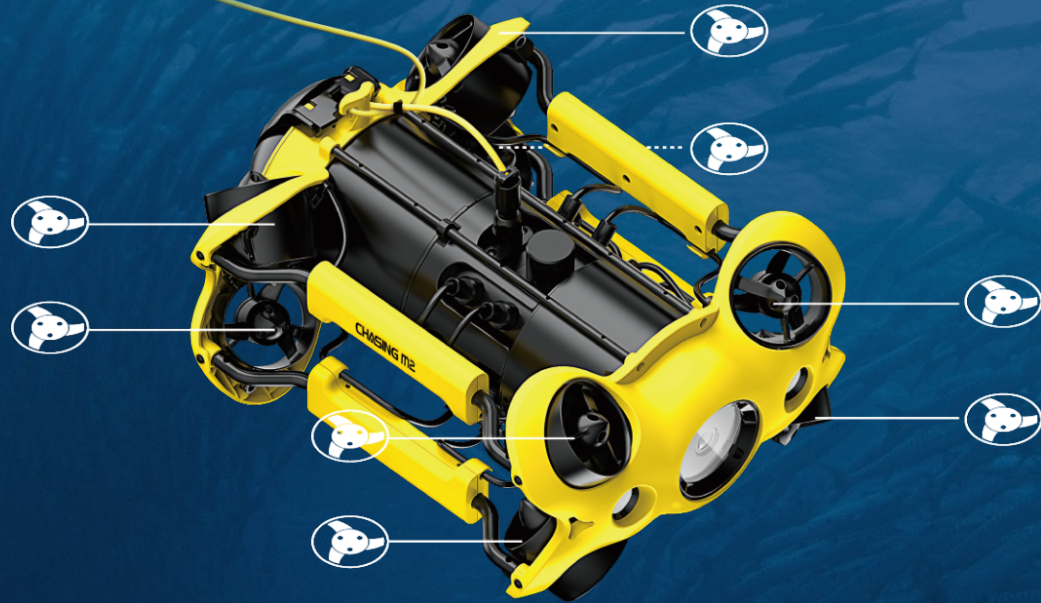


User Friendly
Interaction



- Scientific exploration
- Underwater photography
- Hull&Dock Inspection
- Aquaculture Inspection
- Underwater Search and Rescue

CHASING m2



8 Vectored-Thrusters Layout, OMNI movement

● ROV < 4.5KG / 10 lbs

M2 has 8 Vectored Thrusters layout which allows OMNI movement in all directions. The aluminum alloy compact body allows single person operation and Quick-Deployment in 3 minutes.

CHASING M2

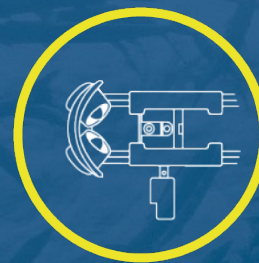


Swappable Battery

The default 97.68Wh lithium battery , Optional 200WH Battery, CHASINGS replaceable battery will make your operation time unlimited.



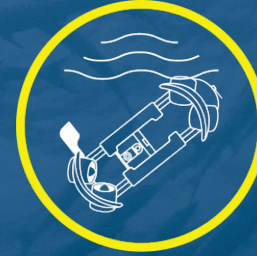
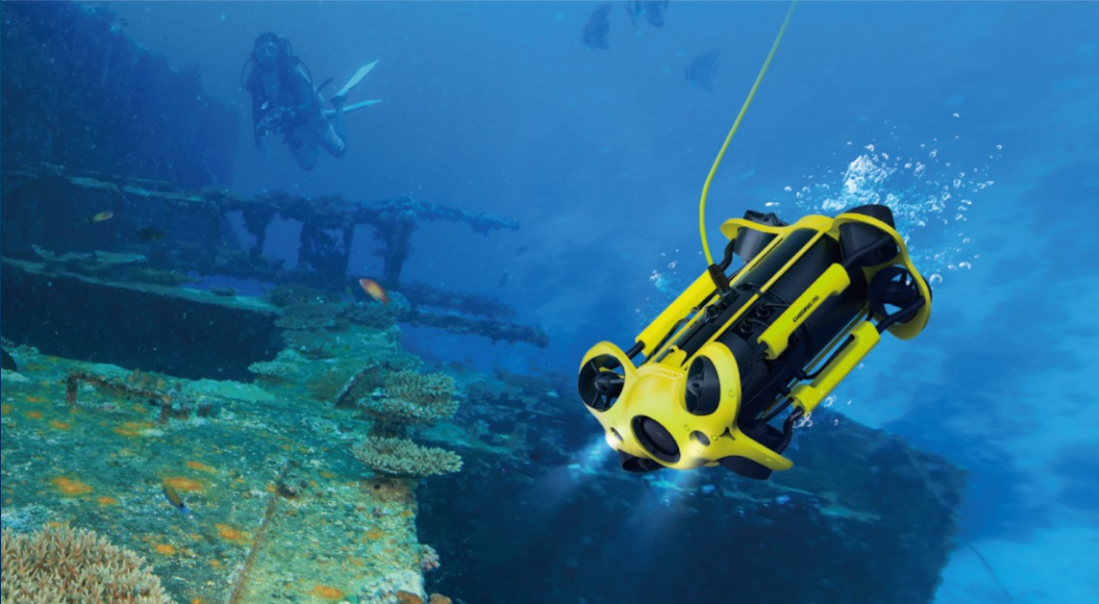
CHASING M2



Sophisticated Attachments

Compatible with sophisticated attachments such as Robot Claw, GoPro camera, external LED lights and laser scaler etc. The maximum attachable capacity is 1.5KG (3.3lbs) , design for many different industry needs.

CHASING M2



3 Knots speed
100 meters depth rating
200 meters radius

M2'S speed can allow you to move locations quickly. Diving up to 330 ft will allow adventures at the deepest depths. The maximum horizontal radius is 200 meters (660FT).

CHASING M2



4K+EIS Image Stabilization , F1.8 Aperture

M2 offers 4K and 1080p video and 12 megapixel photos. Equipped with 1/2.3 SONY CMOS, EIS anti video-shake feature, with 4000 lumen LED lights to capture underwater details.



CHASING M2



Anti-Stuck Motor



The patented Anti-Stuck Motor technology is adopted to greatly reduce the failure probability of the motor getting stuck in the sand, and it can operate safely and reliably in all kinds of complicated underwater environments.

CHASING m2



Removable SD memory card,
download anytime and
anywhere

The 64G SD memory card is removable, and users can
choose SD cards of different capacities, up to 512G.

CHASING m2



User Friendly Interaction



YouTube



Professional remote control and software APP. Depth, temperature, and other parameters can be recorded at the same time. Support live broadcast, Social media sharing, Taking photos while recording video, time-reducing photography, quick editing features , HDMI output. All around improved user-experience.



CHASING E-Reel
(optional)



Professional remote control
and Software APP

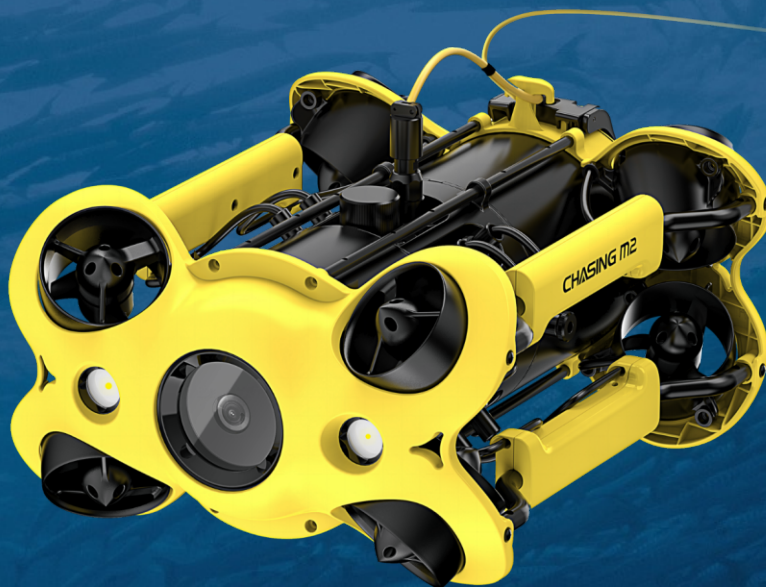


HDMI

CHASING m2



CHASING E-Reel
(optional)



ROV



Remote Control

CHASING M2

| | | |
|---------|-----------------------|-----------------------------------|
| ROV | SIZE | 380*267*165 mm |
| | WEIGHT | 4.5KG |
| | MAX DEPTH | 100 Meters |
| | MAX SPEED | 1.5 m/s (3 Knots) |
| | RUNTIME | 2-4 Hours |
| | BATTERY CYCLE LIFE | >300 Cycle |
| | Operating Temperature | -10C°~45C° |
| SENSOR | IMU | 3 axis gyro/accelerometer/compass |
| | DEPTH SENSOR | ≤±0.25m |
| | TEMPERATURE SENSOR | ≤±2C° |
| CHARGER | POWER | 2.9A/25.2V |
| | CHARGING TIME | 2H |
| LED | BRIGHTNESS | 2*2000 Lumens |
| | COLOR TEMPERATURE | 5000K~5500K |
| | CRI | 85 |
| | DIMMING | THREE GEARS |

| | | |
|--------|----------------|---|
| CAMERA | CMOS | 1/2.3 (SONY) |
| | LENS | F1.8 |
| | FOCUS | 1m |
| | ISO RANGE | 100-6400 |
| | FOV | 152 |
| | MAX RESOLUTION | 12 Meg Pixel |
| | FORMAT | JPEG/DNG |
| | VIDEO | 4K@30Fps 1080P@30Fps/Slow Motion (120Fps) 720P@30Fps/Slow Motion (240Fps) |
| | VIDEO STREAM | 60M |
| | VIDEO FORMAT | MP4 |
| | SD Card | 64G |

The background of the image is a deep blue underwater scene featuring a large, rusted metal shipwreck. Several divers are visible swimming around the structure, which is covered in marine life. The lighting is dim, creating a mysterious and historical atmosphere.

CHASING

Chasing-Innovation Technology Co., Ltd.
www.chasing.com